



DISCOVER THE VALLEYS CANFYDDWCH Y CYMOEDD

Cyfarthfa Castle Museum & Art Gallery, Merthyr Tydfil, 1 May – 15 June
 Oriol ac Amgueddfa Castell Cyfarthfa, Merthyr Tudful, 1 Mai – 15 Mehefin

Front - Blaen

Discover the Valleys Canfyddwch y Cymoedd

Sarah Abbott

printed poster
poster wedi'i argraffu



The exhibition - Yr arddangosfa

1. Discover The Valleys - Canfyddwch y Cymoedd
Sarah Abbott
2. Ogmores Vale, Late Afternoon - Cwm Ogwr, Hwyr yn y Prynawn
Harry Robertson
3. End of Terrace, Glyncorrwg 1 - Pen Teras, Glyncorrwg 1
Tom Hammick
4. Blaenrhondda from Hen Dre'r Mynydd 1 - Blaenrhondda o'r Hen Dre'r Mynydd
Alan Young
5. Maesycwmmmer Viaduct - Traphont Maesycwmmmer
Philip Watkins
6. The Big Cheese, Caerphilly - Y Caws Mawr, Caerffili
Robert Macdonald
7. Blaengarw 1
Mary Lloyd Jones
8. Sgwd Isaf Clun-gwyn, Waterfall Country/Bro Sgydau
Gareth Hugh Davies
9. Blaenafon Ironworks I - Gwaith Haearn Blaenafon I
Pete Monaghan
10. Tredegar
Becky Adams
11. Flying High Over Ebbw Vale (opposite) - Hedfan yn uchel dros Glynebwy (gerferbyn)
Sarah Goodey & visitors to the Environmental Resource Centre, Ebbw Vale
Sarah Goodey ac ymwelwyr i Ganolfan Amgylcheddol Glynebwy
12. Cyfarthfa and the Taf Fechan - Cyfarthfa a'r Taf Fechan
Robert Alwyn Hughes
13. The Hoarding (Dowlais Top to Swansea Bay) - Yr Hysbyswrdd (Dowlais Top i Fae Abertawe)
Robert Alwyn Hughes



Tredegar

Becky Adams

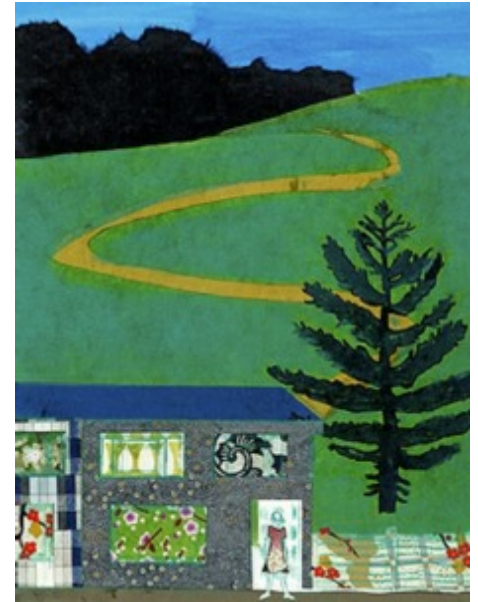
mixed media
cyfryngau cymysg



Waterfall Country
Bro'r Sgydau

Gareth Hugh Davies

oil on board
olew ar fwrdd



End of Terrace
Glyncorrwg 1
Pen Teras
Glyncorrwg 1

Tom Hammick

drypoint, chine colle and watercolour
drypoint, chine colle a dyfrlliw



Blaengarw

Mary Lloyd Jones

mixed media on paper
cyfryngau cymysg ar bapur



**The Big Cheese
Caerphilly
Y Caws Mawr
Caerffili**

Robert Macdonald

oil and acrylic on canvas
olew ac acrylig ar ganfas



**Blaenafon Ironworks
Gwaith Haearn
Blaenafon**

Pete Monaghan

acrylic and collage on board
acrylig a collage ar fwrdd



Ogmore Vale
late afternoon
Cwm Ogwr
hwyr yn y prynhawn

Harry Robertson

oil on panel
olew ar banel



Maesycwmmwr Viaduct
Traphont Maesycwmmwr

Philip Watkins

acrylic on panel
acrylig ar banel



Blaenrhondda
from Hen Dre'r Mynydd 1
o'r Hen Dre'r Mynydd 1

Alan Young

watercolour
dyfrlliw

This project and exhibition has been made possible by the wonderful artists and the support and creativity of key organisations and individuals, especially Mererid Velios at Celfwaith for her commitment.

Mae'r prosiect a'r arddangosfa wedi gweld golau ddydd oherwydd gwaith yr artistiaid rhyfeddol a chefnogaeth a chreadigrwydd sefydliadau ac unigolion allweddol, yn enwedig Mererid Velios yn Celfwaith am ei holl ymrwymiad.

Thanks to/Diolch i:

- Michael Goode, Arts Council of Wales/Cyngor Celfyddydau Cymru
- Simon Regan
- MJ Thornton
- Ian Best
- Chris Parry and the team at Cyfarthfa/Chris Parry a'r tim yng Nghyfarthfa
- Anthony Evans

David Llewellyn
Project Lead
david@blaengad.co.uk



Cyfarthfa and Taff Fechan
Cyfarthfa a'r Taf Fechan

Robert Alwyn Hughes

This exhibition is supported by
Mae'r arddangosfa hon yn cael ei gefnogi gan



MERTHYR TYDFIL
County Borough Council
Cyngor Bwrdeistref Sirol
MERTHYR TUDFUL



celfwaith



Cyngor Celfyddydau Cymru
Arts Council of Wales



The Valleys
Heart and Soul of Wales



Y Cymoedd
Calon ac Enaid Cymru

